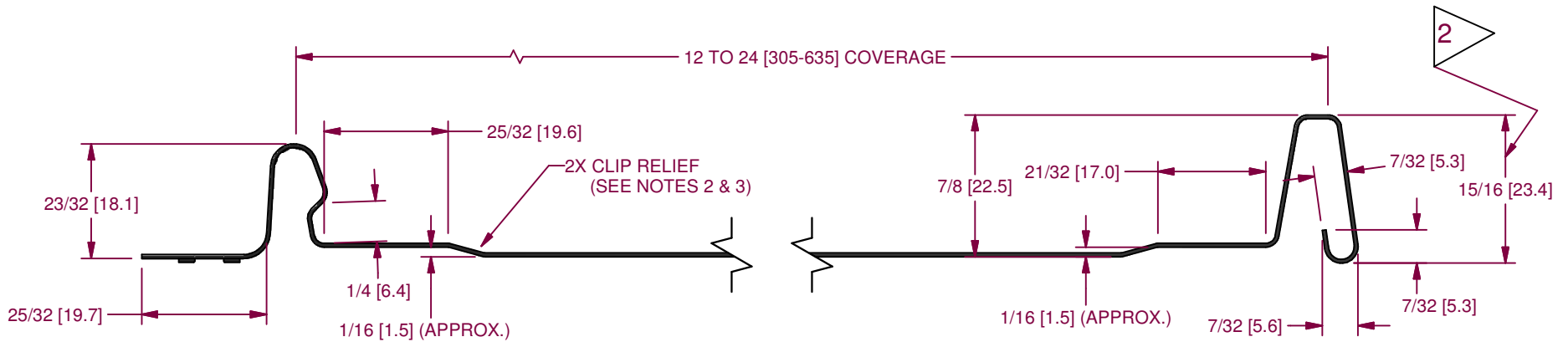
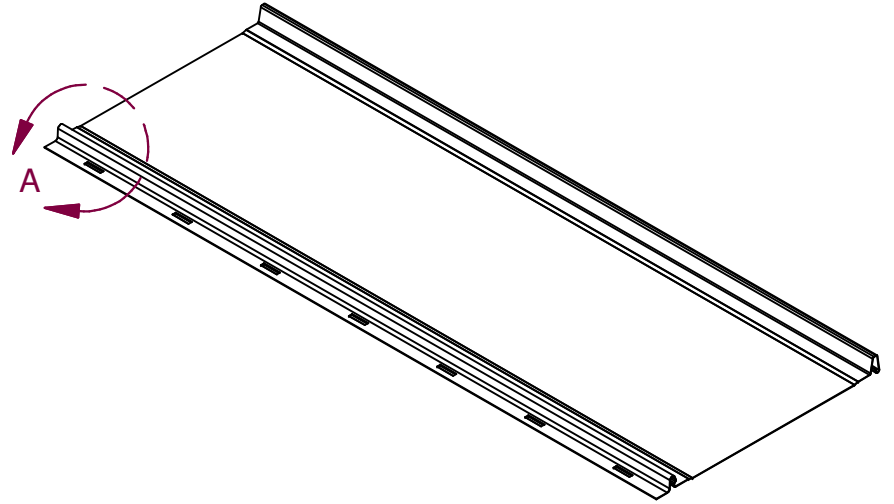


1" x 1/4" SLOT
EQUALLY SPACED
EVERY 5 3/16"

DETAIL A




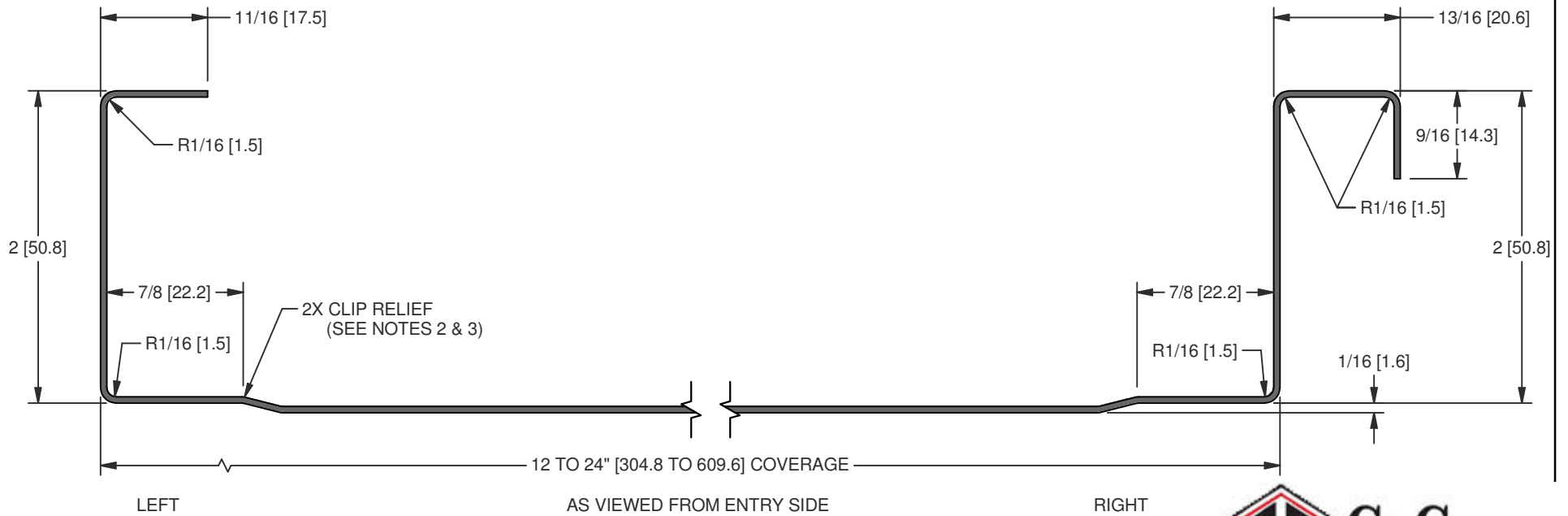
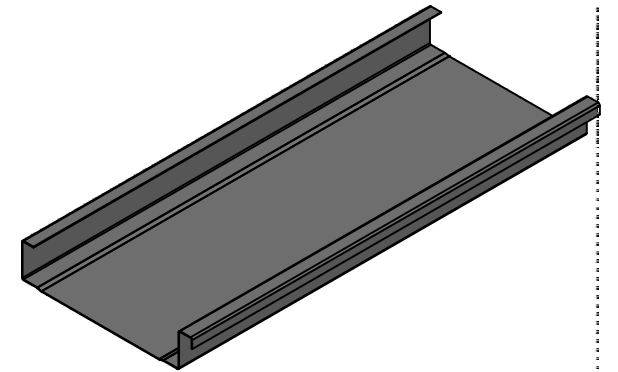
2 INCREASED LENGTH OF LEG
REVISED MATERIAL USAGE



- NOTES:
1. MATERIAL USAGE: 4 1/16"
 2. CLIP RELIEF ROLLERS ARE STANDARD WITH THIS PANEL.
 3. PANEL IS SHOWN WITH CLIP RELIEF ROLLERS ENGAGED.
 4. DUAL DIMENSIONS: Inch [mm]

MATERIAL PAINTED STEEL/PAINTED ALUMINUM/COPPER				FINISH NONE	
REVISION HISTORY	REV	ECR NO.	DATE	RELEASED BY	TOLERANCES
	1	REDRAWN	01/17/08	JD	.XX = ± .01
	2	R-1796	09/22/2011	AJB	.XXX = ± .005
					FRACTION = ± 1/32"
					ANGLE = ± 1/2'


 DRAWN BY DeBerard DATE 06/25/2002		PART NAME		NEW TECH MACHINERY CORP.	
		FF100 PANEL PROFILE			
CHECK BY FRY DATE 01/17/2008		PART NUMBER		SHEET	
FF1-FF1		FF1-FF1		1 OF 1	
				REVISION	
				2	

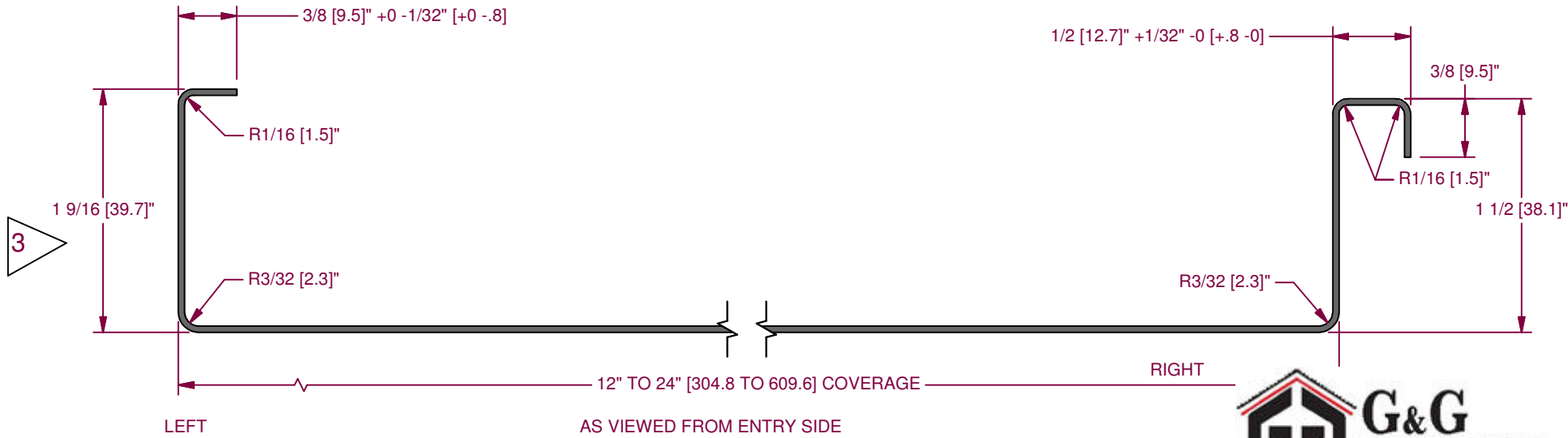
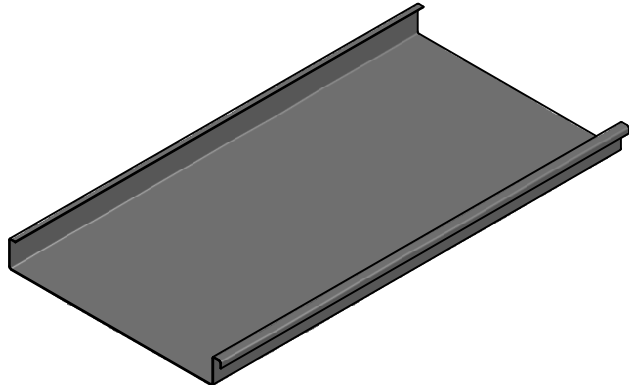


4 CORRECTED ERROR IN REV 3 DRAWING




- NOTES:
1. MATERIAL USAGE: APPROX. 5-13/16" [147.6]
 2. CLIP RELIEF ROLLERS ARE STANDARD WITH THIS PANEL.
 3. PANEL IS SHOWN WITH CLIP RELIEF ROLLERS ENGAGED.
 4. DUAL DIMENSIONS: Inch [mm]

MATERIAL PAINTED STEEL/PAINTED ALUMINIUM/COPPER				FINISH NONE		 NEW TECH MACHINERY CORP.	
REVISION HISTORY	REV	ECR NO.	DATE	RELEASED BY	TOLERANCES	DRAWN BY	PART NAME
	1	REDRAWN	01/17/2008	JD	.XX = ± .01	SAWER	SS200 PANEL PROFILE
	2	ADDED R DIM	07/02/2009	JD	.XXX = ± .005	DATE	
	3	ADDED mm	05/02/2012	JD	FRACTION = ± 1/32"	09/11/2002	
4	CORRECTION	01/17/2017	AJB	ANGLE = ± 1/2'	CHECK BY	PART NUMBER	SHEET
					JD	SP2-200P	1 OF 1
					DATE		REVISION
					01/17/2008		4



NOTES:
 1. MATERIAL USAGE: APPROX. 4" [101.6]
 2. DUAL DIMENSIONS: Inch [mm]

MATERIAL PAINTED STEEL/PAINTED ALUMINUM/COPPER				FINISH NONE		 NEW TECH MACHINERY CORP.	
REVISION HISTORY	REV	ECR NO.	DATE	RELEASED BY	TOLERANCES .XX = ± .01 .XXX = ± .005 FRACTION = ± 1/32" ANGLE = ± 1/2'	DRAWN BY Jim	PART NAME SS150 PANEL PROFILE
	0	REDRAWN	01/17/2008	JD		DATE 06/26/2002	
	1	ADDED R DIM	07/02/2009	JD		CHECK BY JD	PART NUMBER SP5-150P
	2	ADDED TOL.	07/22/2011	JD		DATE 01/17/2008	
3	LEG WAS 1"	05/02/2012	JD		SHEET 1 OF 1	REVISION 3	