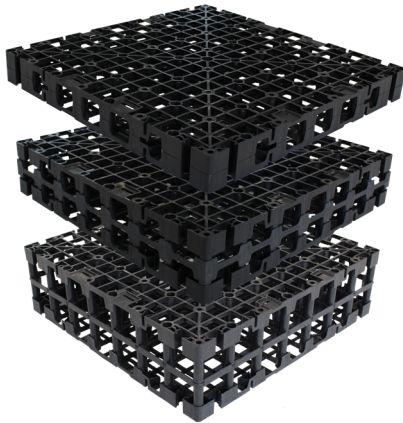
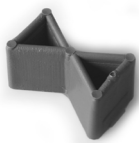


Retention Spacer RSX 70, RSX 120 und RSX 170



Powerful Spacer Elements made of polypropylene for their use on roof surfaces without any inclination, especially for retention build-ups meant for heavy load (e.g. in walkways and driveways).



The Spacer Elements can be connected with each other using special interlocks.

Technical Data

Retention Spacer RSX 70, 120 und 170

Heavy duty Spacer Element made of polypropylene, cavity volume > 95 %.

Material:	100 % Polypropylene
Colour:	black
Dimensions:	ca. 0.60 m x 0.60 m
Compressive strength according to EN ISO 17151:	up to 50 t/m ²

	Order No.	Height	Weight	Maximum retention volume:
RSX 70	3407	ca. 70 mm	ca. 5.0 kg/m ²	ca. 66 l/m ²
RSX 120	3412	ca. 120 mm	ca. 7.6 kg/m ²	ca. 114 l/m ²
RSX 170	3417	ca. 170 mm	ca. 9.1 kg/m ²	ca. 161 l/m ²

Accessories:

Plastic Connector

(requirement: 4 pieces per element $\hat{=}$ ca. 11 pcs./m²)

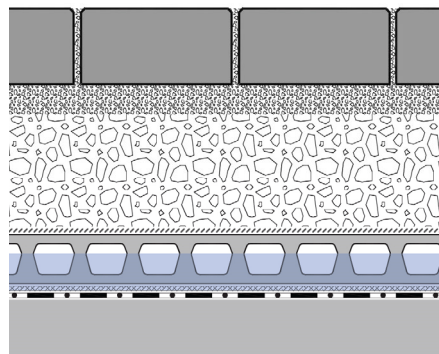
Order No. 9622

Features

- provides for additional water retention on roofs without inclination
- developed specially for its use under high loads (e.g. walkways and driveways)
- high retention volume
- spacious channel system for aeration and drainage
- biologically and chemically neutral
- on request also deliverable in other heights

Application Example

"Driveway with Retention Spacer RSX 70"



Paving slabs in a bedding of stone chippings

Gravel base layer

Filter Sheet PV

Retention Spacer RSX 70

Filter Sheet PV

Roof construction with waterproofing / waterproof concrete

Specification Suggestion

Spacer Elements made of polypropylene, height ca. 70 / 120 / 170 mm, with an integrated multidirectional channel system, cavity volume > 95 %, max. retention volume ca. 66 / 114 / 161 l/m², compressive strength up to 50 t/m², delivery and

installation according to manufacturer's instructions.

Make: ZinCo Retention Spacer RSX 70 / RSX 120 / RSX 170

Enquiries: ZinCo GmbH, Phone: +49 7022 6003-0