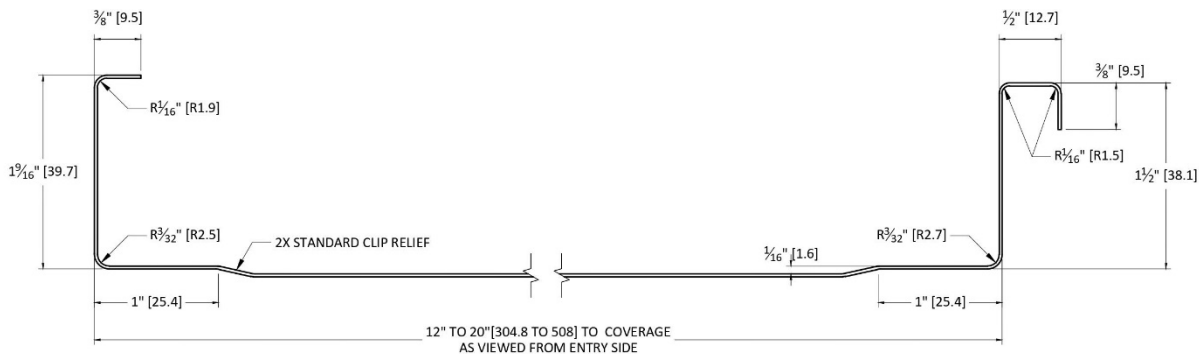
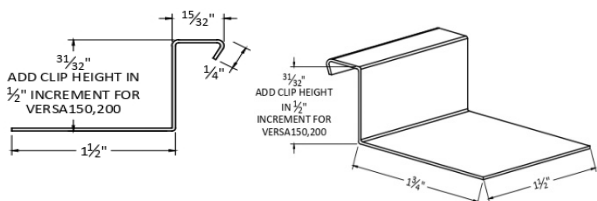




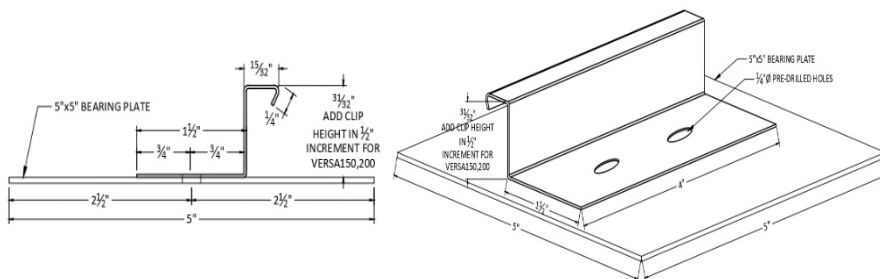
VERSASPAN 150 STANDING SEAM



BA CLIP (WOOD FRAME):



BA CLIP (TOP OF INSULATION):



- OPTIONAL PANEL PROFILE:**
- A) FLAT
 - B) BEAD
 - C) V-RIB

- FINISHES AVAILABLE:**
- A) SMP
 - B) PVDF
 - C) PLAIN GALVALUME

Allowable Strength Design Wind load factor – 1.0 18" Wide panel – 24 ga. (0.024 in.) Allowable Uniform Load (PSF)						
Span	Deflection	Span Length (Feet)				
		3	3.5	4	4.5	5
1	L/180	81	59	45	35	29
	L/240	81	59	45	35	29
	L/360	81	59	41	29	21
2	L/180	81	59	45	35	29
	L/240	81	59	45	35	29
	L/360	81	59	45	35	29
3	L/180	92	68	52	41	33
	L/240	92	68	52	41	33
	L/360	92	68	52	41	33

Note:

- Load data based on ASTM A653, G50 (Fy=50ksi).
- Panel data are subject to change upon Engineer's review, project-specific, and site condition.

