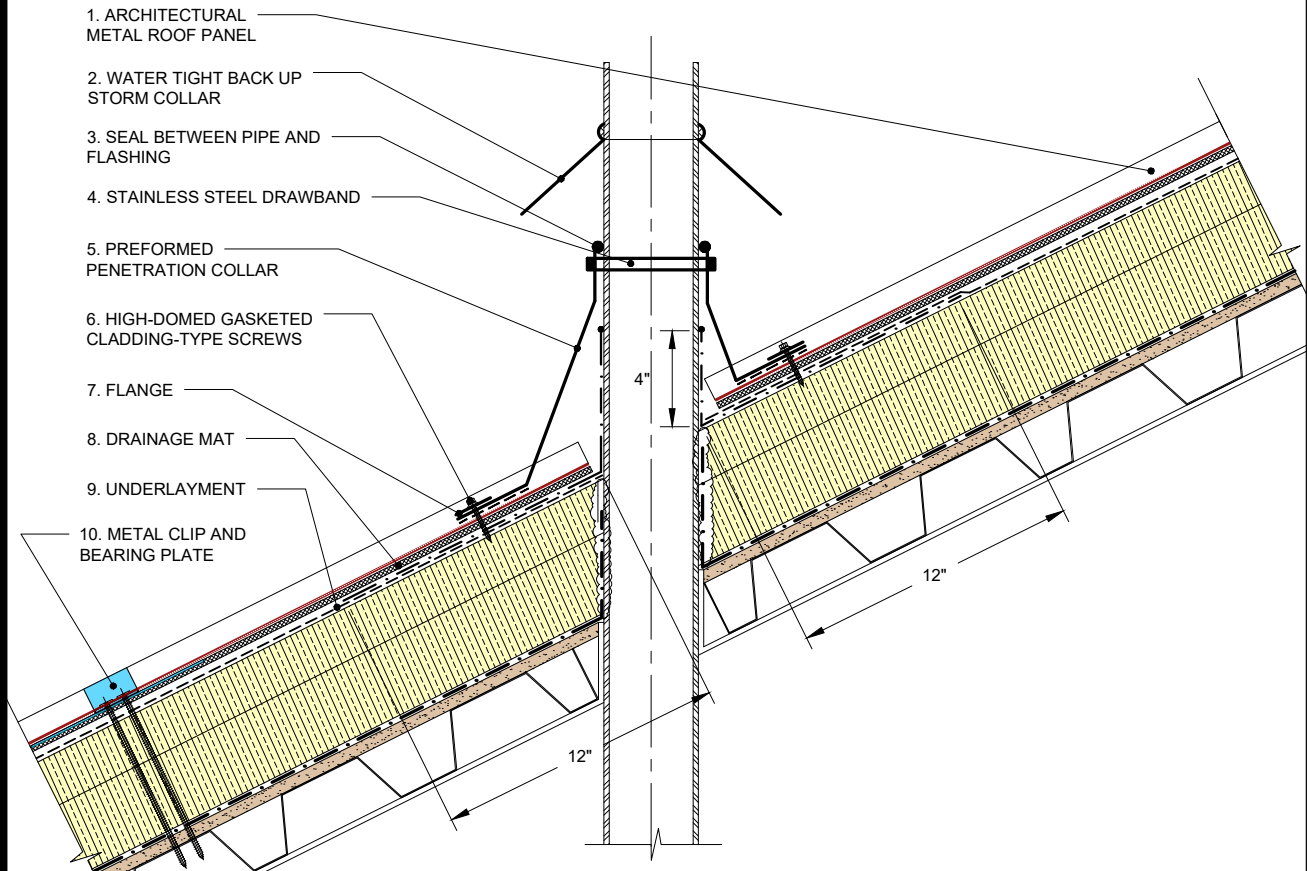


1. ARCHITECTURAL METAL ROOF PANEL
2. WATER TIGHT BACK UP STORM COLLAR
3. SEAL BETWEEN PIPE AND FLASHING
4. STAINLESS STEEL DRAWBAND
5. PREFORMED PENETRATION COLLAR
6. HIGH-DOMED GASKETED CLADDING-TYPE SCREWS
7. FLANGE
8. DRAINAGE MAT
9. UNDERLAYMENT



1. ARCHITECTURAL METAL ROOF PANEL
2. WATER TIGHT BACK UP STORM COLLAR
3. SEAL BETWEEN PIPE AND FLASHING
4. STAINLESS STEEL DRAWBAND
5. PREFORMED PENETRATION COLLAR
6. HIGH-DOMED GASKETED CLADDING-TYPE SCREWS
7. FLANGE
8. DRAINAGE MAT
9. UNDERLAYMENT
10. METAL CLIP AND BEARING PLATE



ROOFING CONTRACTORS  
ASSOCIATION OF  
BRITISH COLUMBIA



○ DRAWINGS ARE ILLUSTRATIONS ONLY AND SHOULD BE USED BY THE COORDINATING PROFESSIONAL IN CONJUNCTION WITH THE OVERALL DESIGN OF THE PROJECT.  
○ REFER TO THE ROOFSTAR GUARANTEE STANDARDS FOR MINIMUM DIMENSIONS OR OTHER REQUIREMENTS.  
○ ALL DRAWINGS REMAIN THE PROPERTY OF RCABC - © 2018 RCABC

## PIPE FLASHING

DWG No. 1 1/2"=1'-0"

Version  
ASM 11.1

Date