

Main Page

Welcome to the RCABC RoofStar **Roofing Practices Manual (RPM)**

This is the official version of the **Roofing Practices Manual** and supersedes all other printed versions which may be in circulation.

The **Roofing Practices Manual** is *the* official guide for RCABC Members, Accepted Inspectors, designers, architects and specification writers designing or applying roofing and waterproofing systems, and describes the **RoofStar Guarantee Standards**, Guiding Principles and Recommended Practices necessary to qualify for a RoofStar Guarantee. The RPM meets or exceeds the current national and provincial standards for construction and wind uplift design resistance. See the Table of Contents below, or use any of the following quick links:

[Accepted Materials](#)

[Construction details](#)

[Design guidelines](#)

[Wind Uplift Standards](#)

[Best Practices](#)

[Reference materials](#)

[click HERE](#) for a brief tutorial of the **Roofing Practices Manual**

[Technical Updates](#)

NOTICE to Readers: This online presentation of the **Roofing Practices Manual** is a restructuring of its original format. All updates to the older version of this Manual have been incorporated into the present structure. **Yellow highlighted** text indicates a change to the Manual within the past 12 months. Highlighting remains in effect for 365 days. Consult the **Technical Updates** for a list of

changes since 2010.

Table of Contents

A. About

[Introduction](#)

[The RoofStar Guarantee Program](#)

[Independent Inspections](#)

[Requesting and Specifying a RoofStar Guarantee](#)

B. Essential Elements

[Design Considerations](#)

[Roof Classes](#)

[Roof Plans](#)

[Roof Decks](#)

[Roof Deck Overlay](#)

[Air and Vapour Control](#)

[Insulating the Roof](#)

[Insulation Joints and Overlay Boards](#)

[Fasteners & Fastening Requirements](#)

[BUR Materials](#)

[Low-slope Membranes](#)

[Steep-slope Roof Coverings](#)

[Membrane Surfaces](#)

[Protected and Modified Protected Roof Systems](#)

[Eave Protection](#)

[Building Ventilation](#)

C. Accepted Materials

[By Product Name](#)

[By Manufacturer](#)

[By Assembly](#)

[Application for Accepted Materials](#)

D. Low Slope Membrane Roofs

[NEW! Wind Uplift Design and CSA A123.21](#)

[SBS Modified Bitumen Roof Standards](#)

[EPDM Roof Standards](#)

[TPO/PVC Roof Standards](#)
[Built-up Roof \(BUR\) Standards](#)
[Other Flexible Membrane Roof Standards](#)

E. Steep Slope Roofs

[Architectural Sheet Metal \(ASM\) Roof Standards](#)
[Asphalt Shingle Roof Standards](#)
[Cedar Shingle and Shake Roof Standards](#)
[Tile & Slate Roofs](#)

F. Waterproofing Plazas, Promenades and Terraces

G. Construction Details

H. General Information

[Roof Maintenance](#)
[Conversion Tables and Charts](#)
[Metric and Standard Measurements \(Symbols and Guidelines\)](#)
[Additional Standards for Materials](#)
[Health & Safety](#)
[Glossary](#)
[Bibliography and References](#)

Learn more about...



[Low Slope Membranes](#)



[EPDM Roofs](#)



[Rooftop Gardens](#)



[Waterproofing Systems & Planters](#)



[Asphalt Shingles](#)



[Architectural Sheet Metal Roofs](#)



[Insulation for Low Slope Roofs](#)

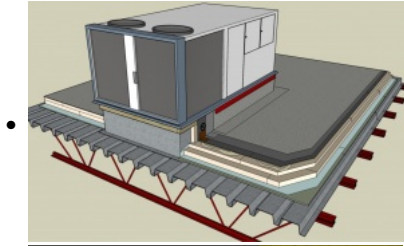


[Protected / Ballasted Roofs](#)

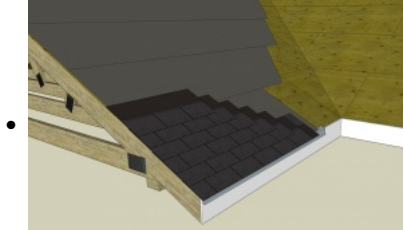


[Roof Maintenance](#)

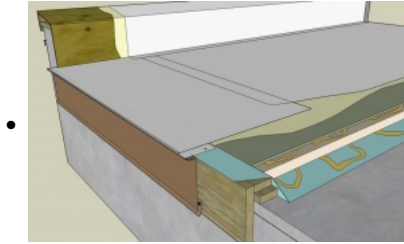
Construction Details



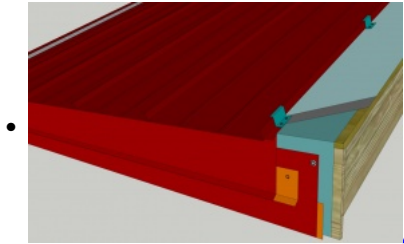
[*2-Ply SBS Modified Bitumen Roofs*](#)



[*Asphalt Shingled Roofs*](#)



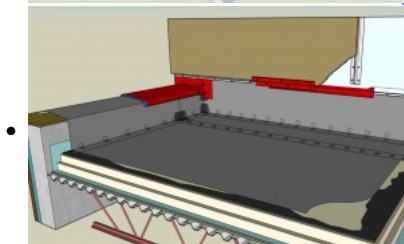
[*TPO / PVC Roofs*](#)



[*Architectural Sheet Metal Roofs*](#)



[*Waterproofing Systems*](#)



[*EPDM Roofs*](#)

@@@@END OF CONSTRUCTION DETAILS