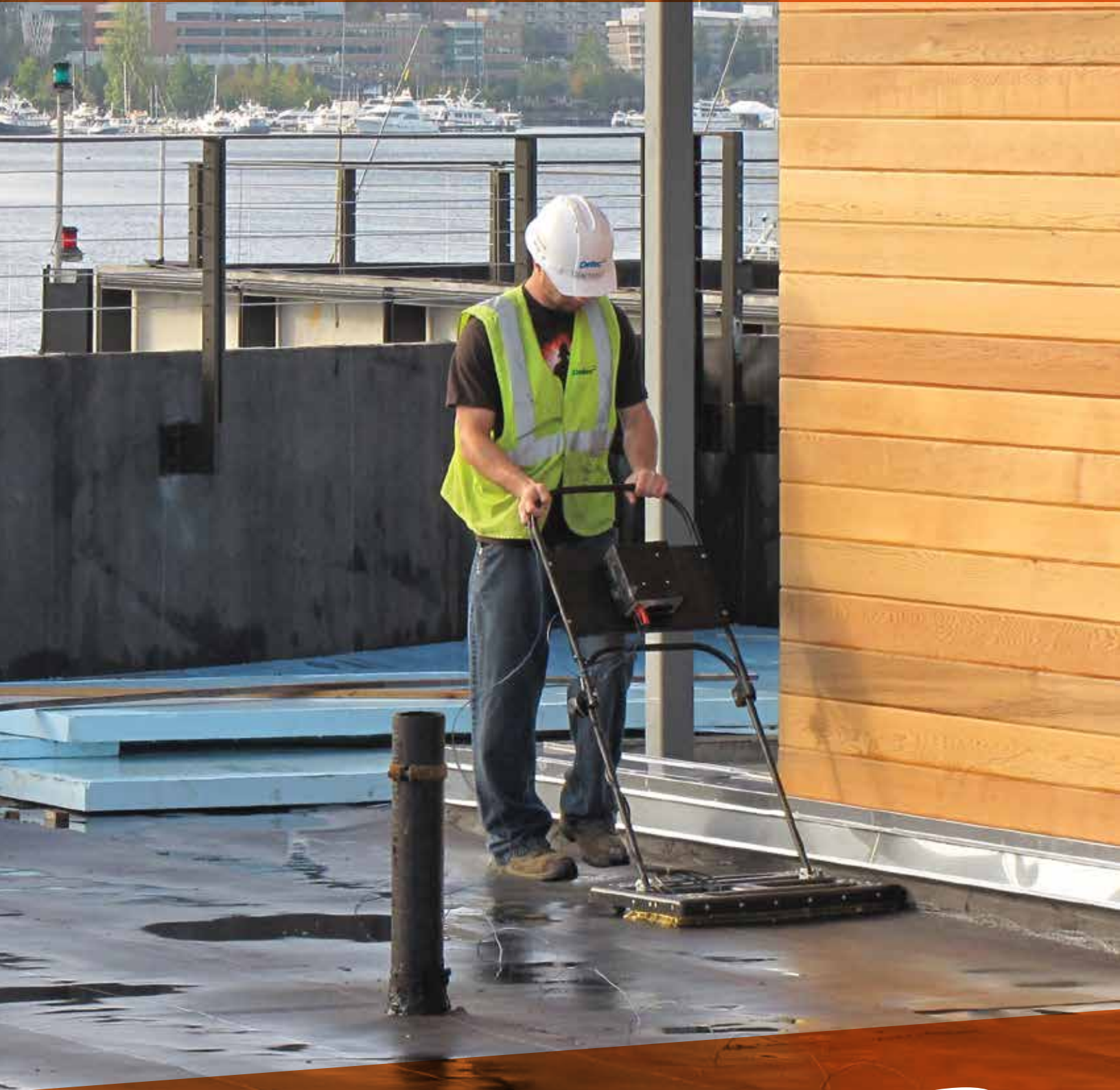


SUPERIOR MEMBRANE INTEGRITY  
TESTING SERVICE FOR ROOFS

IntegriScan™



**Detec**™

ELECTRONIC LEAK DETECTION



# IntegriScan™

KNOW FOR CERTAIN.

Have a new building that will need its roof tested?

Call us toll-free today at

**855.75DETEC**

[855.753.3832]

## The Value You Demand. The Integrity Your Membrane Deserves.

Detec's IntegriScan testing service is the most accurate testing method you can specify to confirm that the waterproof membrane on your structure is closed dry and watertight during construction. The technology unique to IntegriScan facilitates a more reliable test signal than the electric field vector mapping method, ensuring a more

accurate test is performed. Because it can be implemented faster than electric field vector mapping, IntegriScan also ensures the most expedient route to warranty certification.

**And now, with the advent of TruGround™ Conductive Primer, only Detec can test conventional membrane assemblies without the compromise of added wire mesh.**

## The Essential QA Test for Every New Roof.

- **Verifies** the integrity of roofs, plaza decks or linings -and the only service that can reliably perform vertical surface tests
- **Pinpoints breaches** during membrane installation so repairs can be made immediately--ensuring minimal impact to your construction schedule
- **Completes testing in as little as half the time** as outdated methods like electric field vector mapping or flood testing, again, so you can stay on schedule
- **Ensures 100% coverage** of the membrane and virtually eliminates the potential for false positives and complete breach misses, unlike the sampling method of electric field vector mapping
- **Provides a more thorough overall assessment** than electric field vector mapping or flood testing



## Introducing TruGround™ Conductive Primer

Applying TruGround finally enables a **truly conclusive and reliable** membrane integrity test for conventional roof assemblies.

### Because Closer Is Better.

TruGround is applied **directly under** the membrane on a conventional assembly. TruGround can promote membrane adhesion, and has none of the performance issues associated with an added wire mesh layer.

- **Makes testing a conventional membrane assembly possible for the life of the assembly**
- **Dries in about 30 minutes – can be rolled, sprayed, or pre-applied for more efficient, cost effective installation than an added wire mesh layer**
- **Chemically and mechanically compatible with all major membrane types**
- **Provides stronger, more reliable conductance – ensuring virtually 100% accuracy in detecting breaches in the membrane**

# GET REAL, GET DETEC.

Other testing methods eventually prove inconclusive on many membrane assembly types. The advanced technology behind IntegriScan™ goes further.



	<b>INTEGRISCAN™</b>	<b>ELECTRIC FIELD VECTOR MAPPING</b>	<b>FLOOD TESTING</b>
--	---------------------	--------------------------------------	----------------------

## TECHNOLOGY

<b>Method</b>	New Dual-Sensor Cross Scan Technology (Proprietary)	Triangulation sampling technology developed in the early 1970's	Gravity
<b>Testing Device</b>	Mobile platforms that isolate test area for better conductance	Install perimeter wire and utilize probing poles to sample area within	All downspouts are blocked, water sits on the roof for 24-48 hours

## PERFORMANCE

<b>Coverage</b>	<b>100%</b> of horizontal, low-slope and vertical surfaces	Testing is done via sampling, so actual coverage is indeterminate. Can only visually inspect vertical surfaces	Horizontal surfaces only
<b>Test Inverted Assemblies</b>	<b>YES</b>	YES, but due to large isolation area, full conductivity can't be verified	Will indicate (but not find) only obvious leaks, will not find breaches
<b>Test Conventional Assemblies</b>	<b>YES</b> , with C-Coat on new assemblies and with wire mesh pre-installed	Only if a wire mesh is properly installed beforehand <b>directly</b> under the membrane	Will indicate (but not find) only obvious leaks, will not find breaches
<b>Test Vertical Surfaces</b>	<b>YES</b>	<b>NO</b>	<b>NO</b>
<b>Test Time</b>	<b>Fastest</b>	Moderate	Slowest
<b>Impact on Construction Schedule</b>	<b>Minimum</b>	Minimum to Moderate	Maximum
<b>Reliability</b>	<b>Most Accurate</b> Virtually no chance for false positives or complete misses. Wall junctions, perimeter details, and membrane penetrations are tested electronically.	Higher potential for false positives and complete misses. Wall junctions, perimeter details, and membrane penetrations <b>can only be visually inspected.</b>	<b>Least Accurate</b> Ultimately this test is inconclusive by design
<b>RCABC‡ Roofing Guarantee Program</b>	<b>APPROVED</b>	<b>NOT APPROVED</b>	<b>NOT APPROVED</b>

## VALUE VS. RISK



<ul style="list-style-type: none"> <li>• 100% coverage</li> <li>• Fastest test time</li> <li>• Most accurate results</li> <li>• Least impact to construction schedule</li> <li>• Recognized as a superior method by roofing orgs.</li> <li>• Works in tandem with our automated leak detection and moisture monitoring systems</li> </ul>	<ul style="list-style-type: none"> <li>• Perimeter wire test method does not provide 100% coverage and can be easily compromised</li> <li>• No guarantee of complete conductivity which equates to inconclusive test</li> <li>• No way to verify sampling has covered entire membrane</li> <li>• Exorbitant return visit testing fees relative to IntegriScan</li> <li>• Most installation materials are originally designed for other uses [duct tape, chicken wire]</li> </ul>	<ul style="list-style-type: none"> <li>• Costly and labor intensive to prepare and test</li> <li>• Will not identify breach location</li> <li>• Surface tension of water may be too strong to penetrate a breach during the testing period</li> <li>• Drainage blocks may be covering existing breaches</li> <li>• Can potentially cause water and structural damage to areas below</li> <li>• Poor choice for risk mitigation</li> </ul>
---	--	---

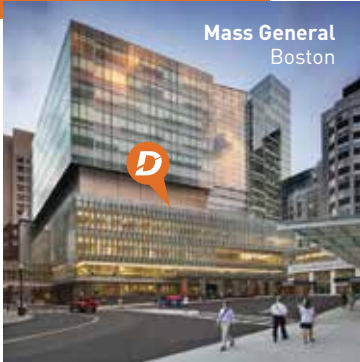
‡Roofing Contractors Association of British Columbia



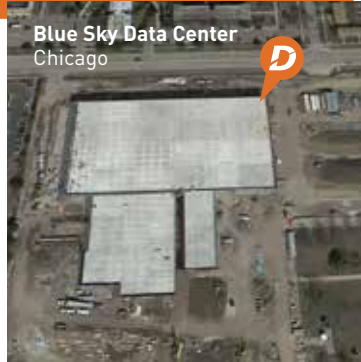
# Many Membrane Types. One Choice for Quality Assurance.

Projects of all scale and scope throughout North America have specified Detec to ensure peace of mind and long service life for their membrane assemblies.

## INSTITUTIONAL



## ARCHIVAL/DATA STORAGE



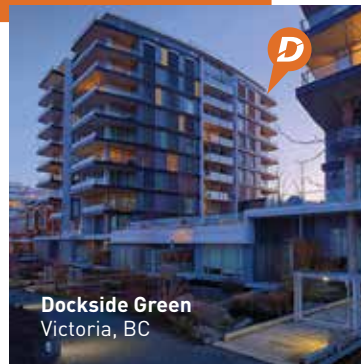
## GREEN/VEGETATED



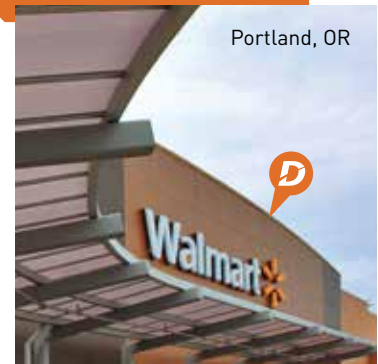
## PLAZA DECKS/PARKADES



## LEED TARGETED



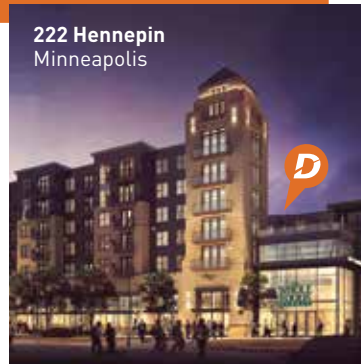
## COMMERCIAL/RETAIL



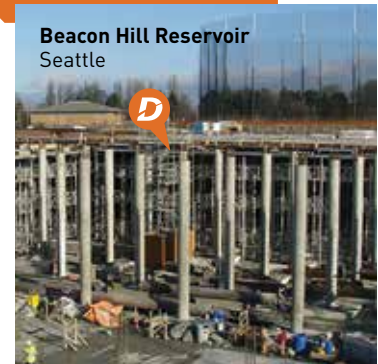
## EVENT FACILITIES



## MIXED USE/LIVE-WORK



## RESERVOIRS



The smartest leak detection solutions  
are all under one roof.



**Detec**<sup>™</sup>  
ELECTRONIC LEAK DETECTION

Throughout North America, call us toll-free  
**855.75DETEC** (855.753.3832)  
Get the Spec → go to **detecsystems.com**